



natural latex



**latexco**<sup>®</sup>  
natural latex



## Latexco natural latex

The 'natural latex' range comprises all products made in our genuine natural latex.

Products that contain at least 85% natural latex (or over) are qualified as a natural product.

We also offer 100% natural latex products and natural latex mattresses in FSC® certified natural latex.







## At the core of our 'natural latex' range: high-quality raw materials and highly innovative production processes



### What is natural latex?

Latex is a white milky fluid, a stable dispersion of rubber (organic polymer) particles in water. Natural latex is the juice of the tropical rubber tree 'Hevea Brasiliensis' that grows in large plantations in Southeast Asia (Thailand, Malaysia, Vietnam, Indonesia), parts of Africa (Cameroon) and South America (Brazil).

To make sure that our products offer exceptional quality characteristics, we only use high-quality natural latex from selected and controlled plantations.

## How do we produce our 'natural latex' bedding products?



### Dunlop process

The production process of Latexco was originally inspired by the Dunlop process, but over the more than 60 years of experience Latexco has made a lot of improvements to what, in the meantime, can best be described as the 'Latexco production process'. This process uses conventional steam heating & drying methods for the production of latex components. We use the Dunlop process to manufacture mattresses, pillows and toppers.

### SonoCore process

In 2011, we introduced a revolutionary new-process, the SonoCore process. A unique process which is now used to produce a range of toppers. The SonoCore technology is based on dielectric heating. With this wave technology - instead of steam - the latex is vulcanized endogenously. The vulcanization starts in the middle of the latexproduct and gradually goes to the outside. To complete the SonoCore technology a full revision of the entire latex compound formulations was developed. The combination of the new SonoCore process with new compound formulations, results in a new, revolutionary latex foam called Pulse. Moreover, the process significantly reduces energy consumption.





H1E

FC210

8.8  
VD

8.8  
VD

8.8  
VD

8.8  
VD

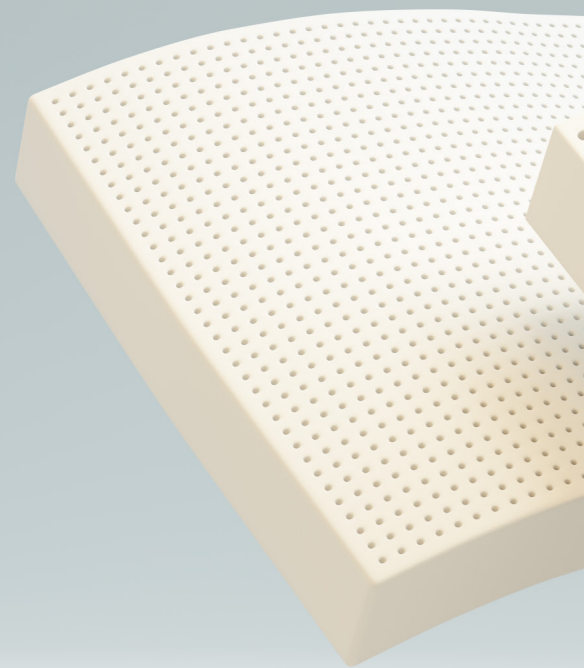


# Our 'natural latex' productline:

The mattresses in our 'natural latex' range are made of - 85 % or 100 % - natural latex or FSC certified latex. Bedding products that contain at least 85% natural latex, are qualified as 'natural products'.

You can choose the thickness and size of the 'natural latex' mattresses, as well as the density/hardness. Depending on the mattress you choose, our mattresses come with comfort zones, e.g. at the level of the sleeper's shoulders and hips, to provide better support to the body.

As an option, we can also post-treat our mattresses with a fire-retardant treatment.



## natural latex mattresses

There are 'natural latex' mattresses with five or seven comfort zones. People who prefer to sleep on a uniformly perforated mattress, can choose the stift mattress.

### Comfort zones

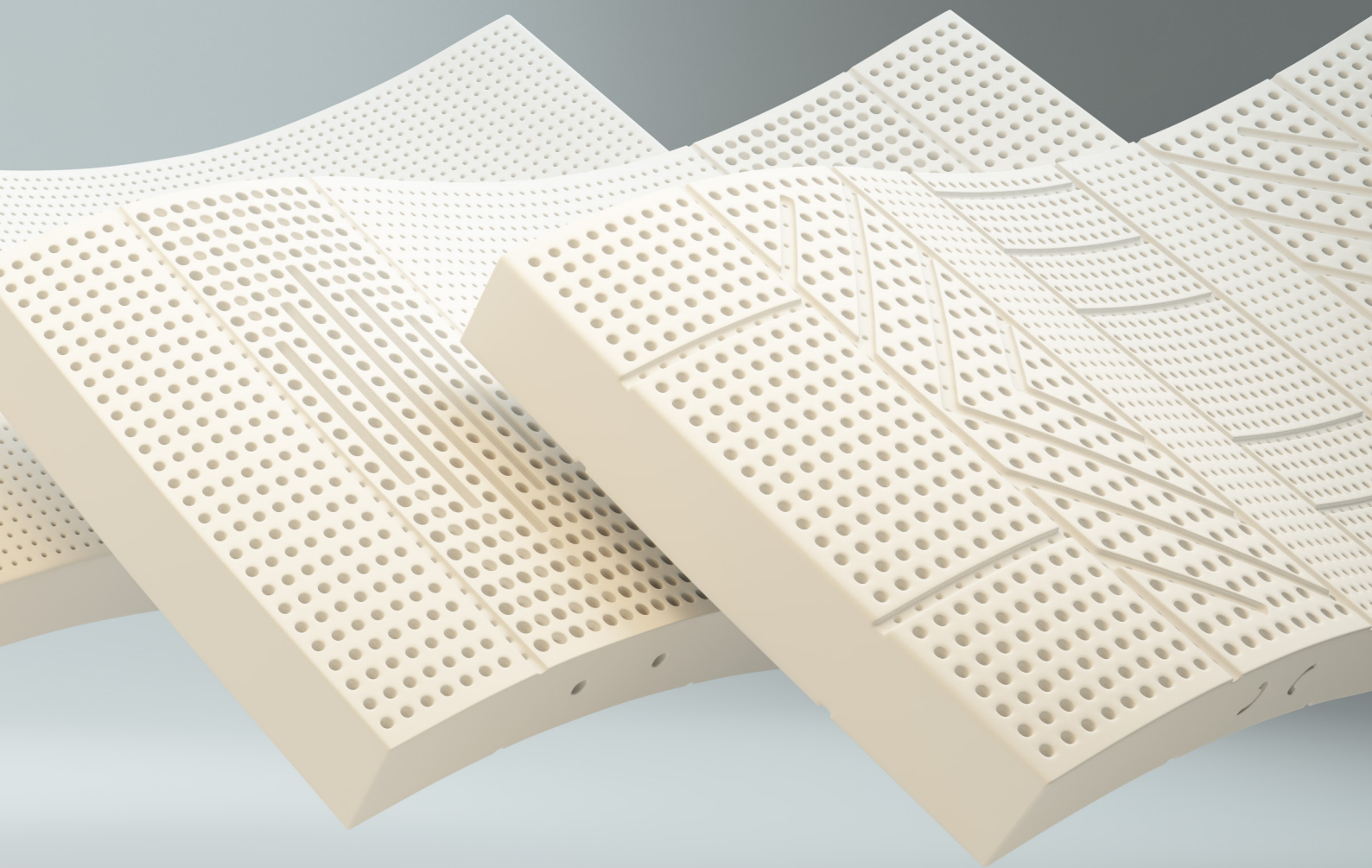
#### Stift

A stift mattress core has a uniformly perforated surface. The hardness is identical over the whole mattress.

#### Mattresses with 5 or 7 comfort zones

Thanks to the comfort zones, each part of the body is correctly supported. The zones ensure that the spine, when sleeping on your side, is kept nice and straight. And, when lying on your back, that the natural curve is maintained. We determined the exact positioning of the comfort zones in partnership with the renowned Institute of Ergonomics in Munich.

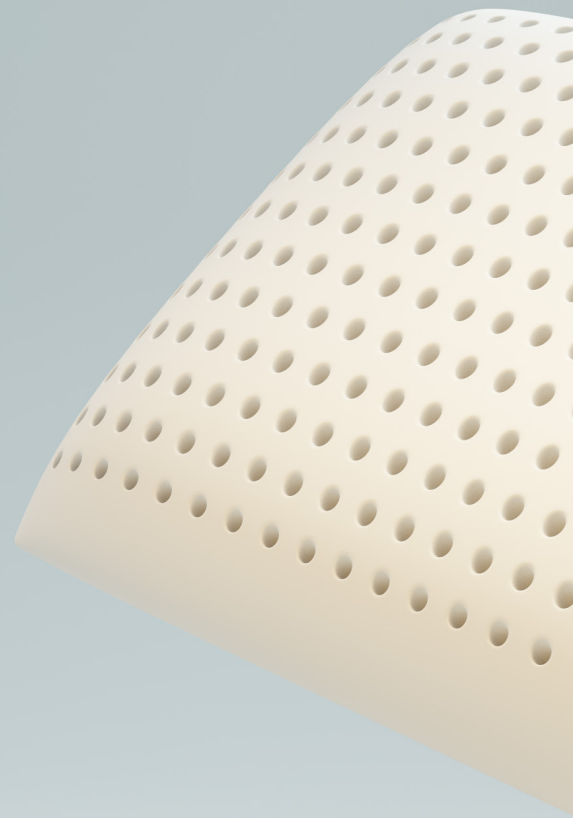




## Treatment

### Fire-retardant

Our mattresses can also be post-treated to make them fire-retardant, on the basis of a patented technology. In this way, they fulfill the main fire-retardant standards in the bedding sector.



## natural latex pillows

The pillows in the 'natural latex' range are made from 100% natural latex. Natural latex ensures an unparalleled elasticity and is very soft to the touch. Our 'natural latex' pillows come in different shapes and sizes. Pillows can have also a fire-retardant treatment.

### Shapes

#### Standard

Our standard pillows provide full head and neck support.

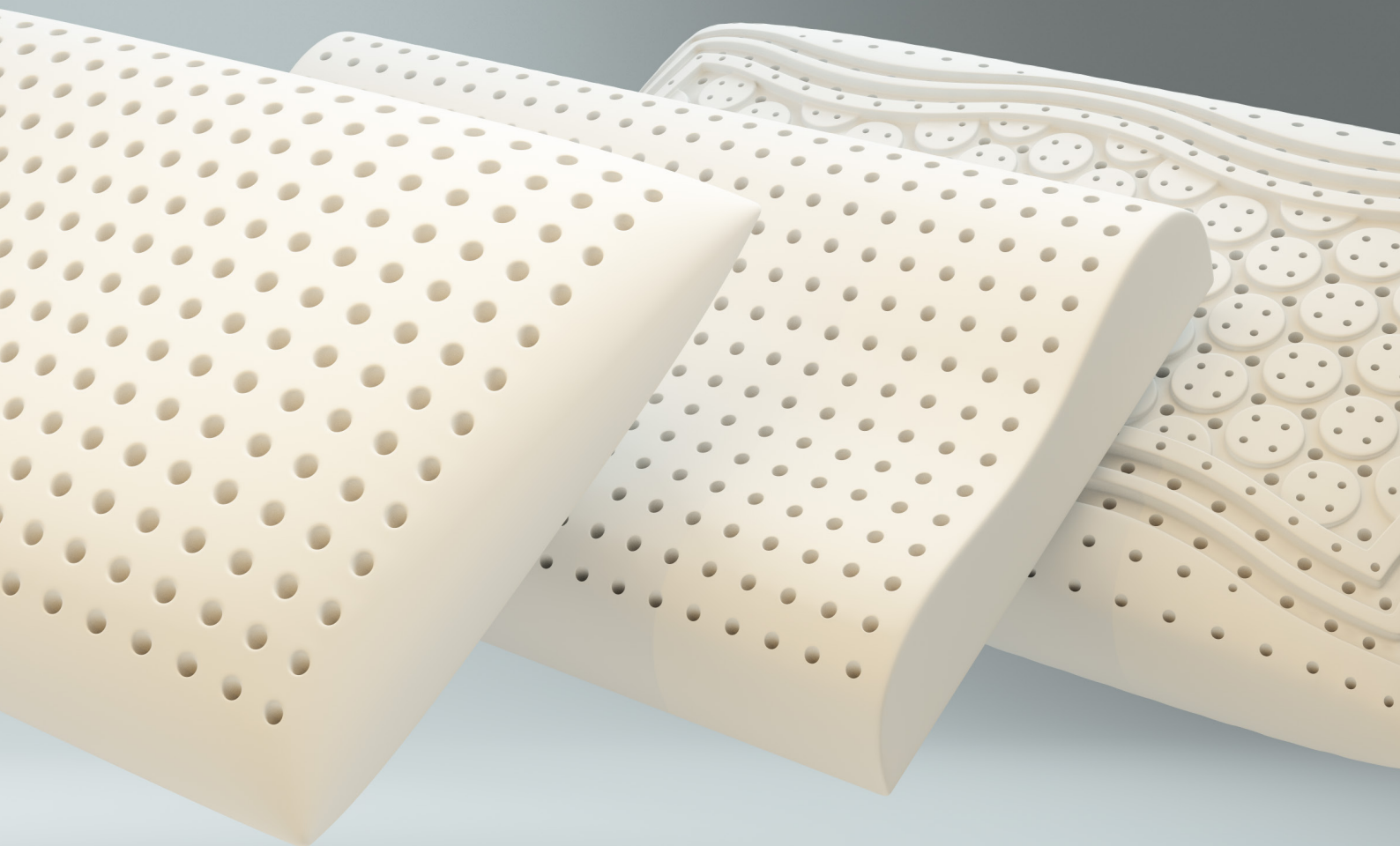
#### Ergonomic

Thanks to the specific design, this ergonomic pillow is ideal for sleepers with neck complaints.

#### Special

Latexco also manufactures pillows that are fully tailored to a customer's particular and personal requirements.





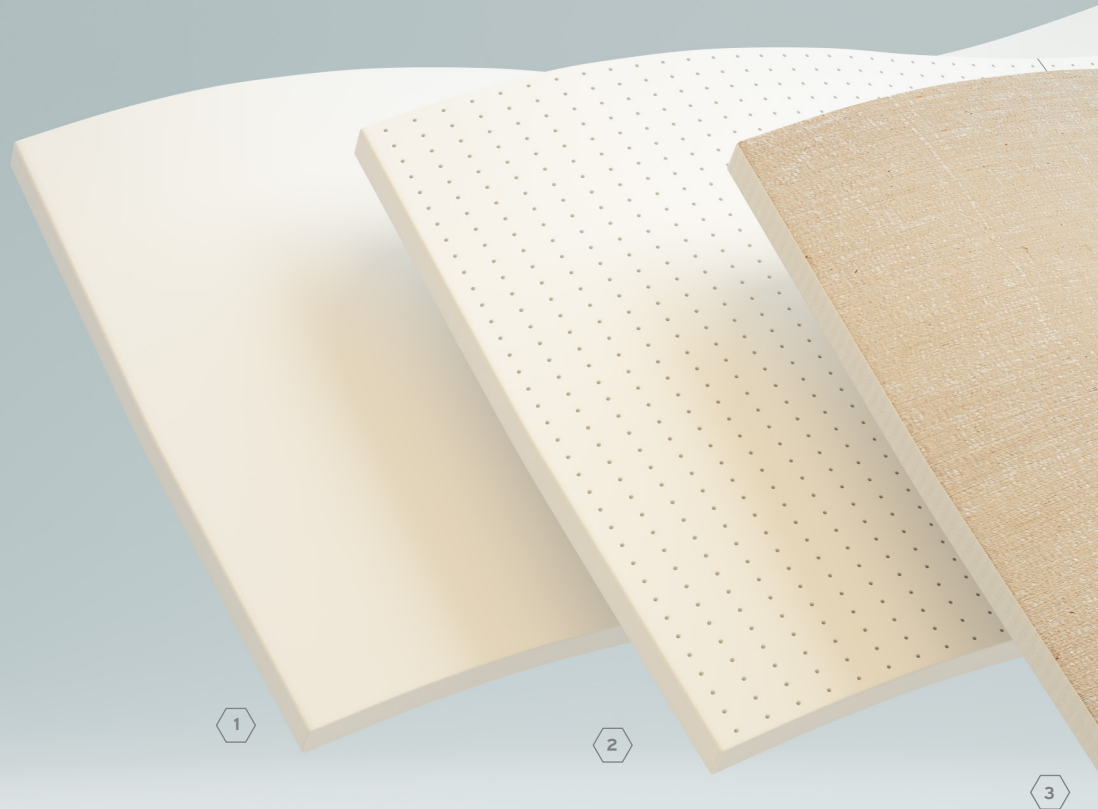
## **Treatment**

### **Fire-retardant**

Our pillows can also be post-treated to make them fire-retardant, on the basis of a patented technology. In this way, they fulfill the main fire-retardant standards in the bedding sector.

The 'natural latex' toppers are made from 85% or 100% natural latex. The toppers are either manufactured via the traditional Dunlop process (85% natural latex) or via our SonoCore process. The SonoCore process is used to produce our Pulse 'natural latex' topper, which contains 100% natural latex.

All the toppers in the 'natural latex' range are available as a sheet or on roll. You can choose from different sizes and thicknesses and various post-treatments are available.



## natural latex toppers

### Toppers manufactured through the Dunlop process

**1 Solid topper** - topper without options

#### Options

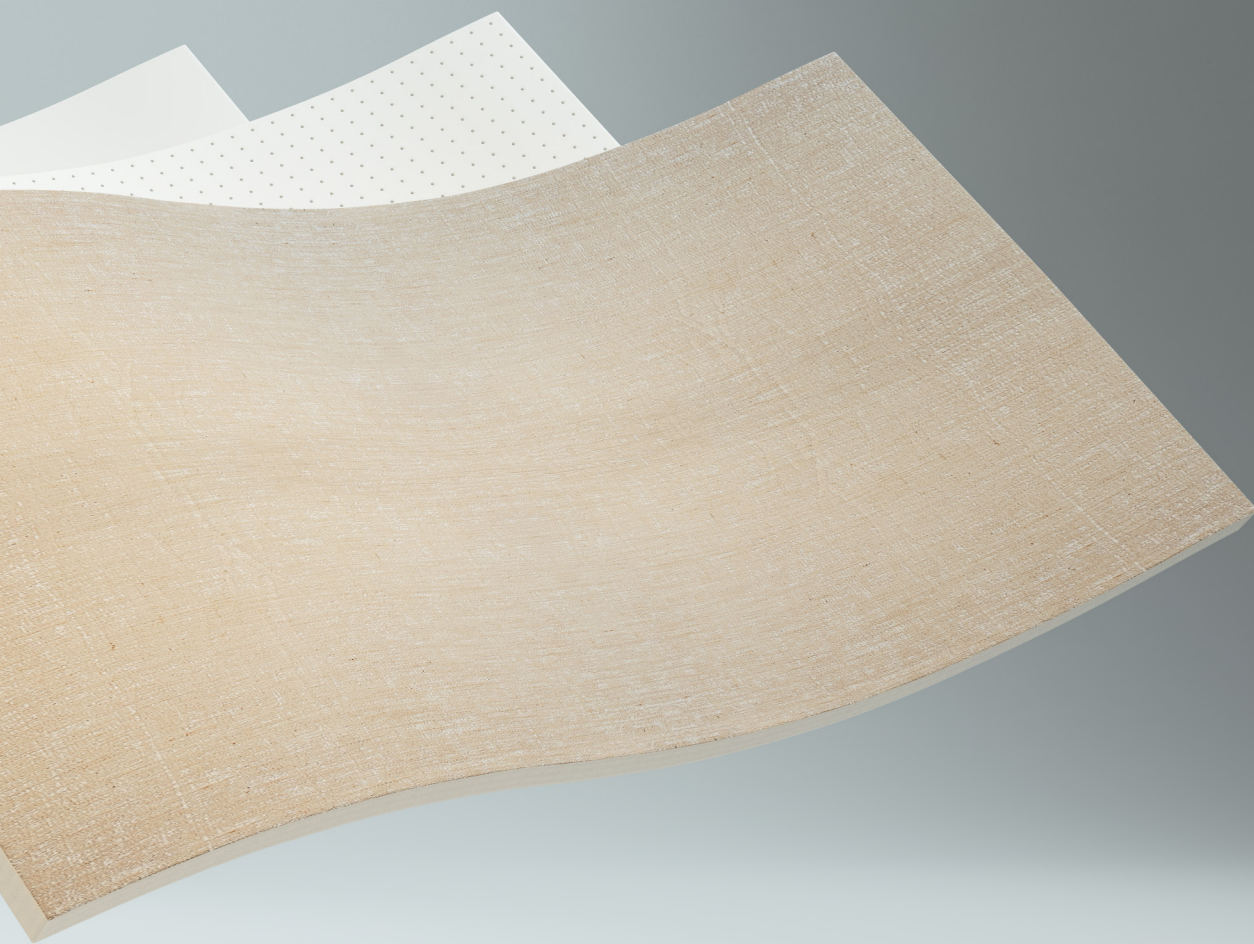
**2 Perforations**

**Standard:** Standard perforations ensure perfect ventilation.

**5-zone perforation:** designed with 5 zones to offer perfect comfort and support to your body.

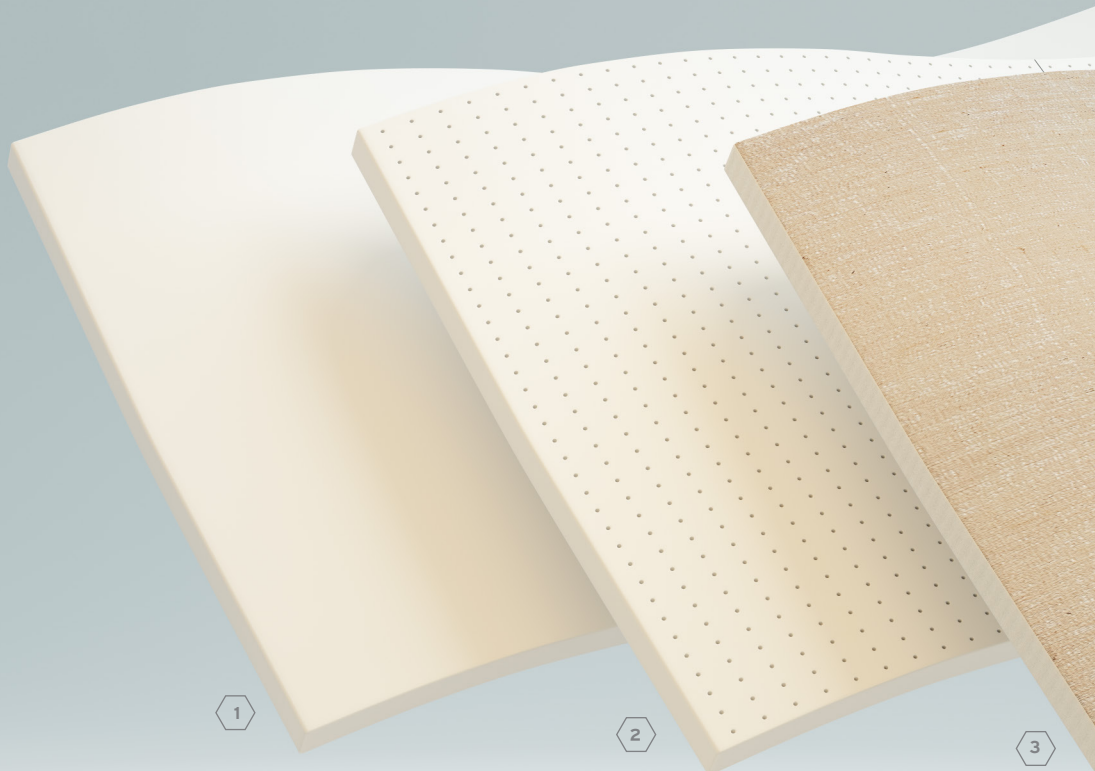
**Micro-perforation:** the micro-perforations ensure extreme ventilation and moisture regulation, which results in an enhanced microclimate.





### **Jute**

We can also provide toppers foamed on jute, as a protective coat between the pocket spring mattress core and the topper. The jute ensures extra pressure distribution.



## natural latex toppers

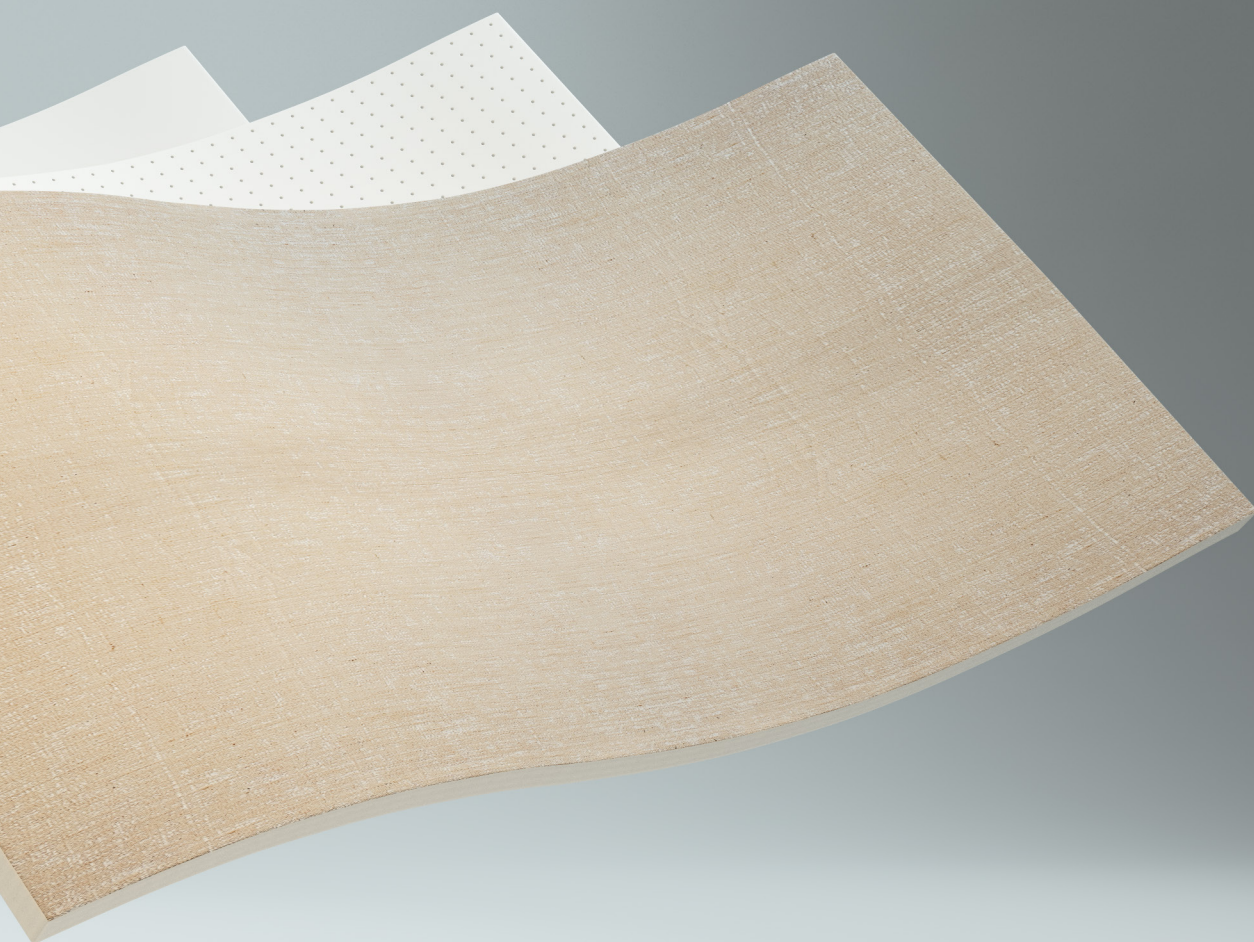
Toppers manufactured through the SonoCore process

### 1 Solid Pulse topper - topper without options

The revolutionary SonoCore process sets new benchmark standards for latex foam bed components.

The SonoCore process gives Pulse latex a homogeneous foam structure, which makes it truly unique. Pulse latex excels on all comfort levels. The foam structure promotes an excellent hysteresis and extremely high tensile strength. Moreover, it boasts superior ventilation properties, which ensure a perfectly balanced microclimate and optimised humidity control.





## Options

2

### Perforations

**7-zone perforation:** designed with 7 zones to offer perfect comfort and support to your body.

**Micro-perforation:** the micro-perforations ensure extreme ventilation and moisture regulation, which results in an enhanced microclimate.

3

### Jute

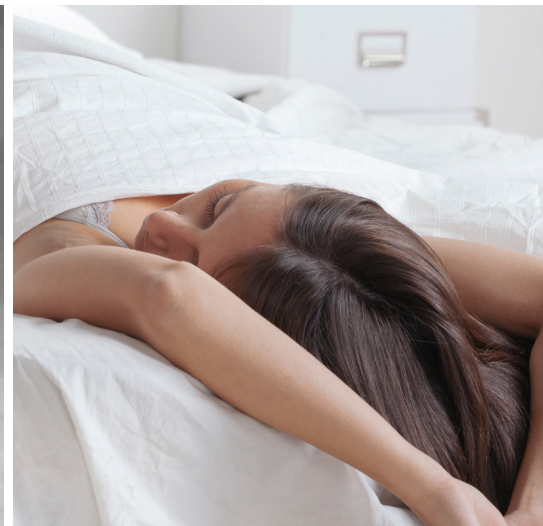
We can also provide the topper foamed on jute, as a protective coat between the pocket spring mattress core and the topper. The jute ensures extra pressure distribution.

## Certificates a token of our dedication to quality



### Öko Tex

Latexco has been awarded the Öko-tex 100 “free of harmful substances” quality label. Laboratory tests have proven that our products are free of harmful substances that pose a threat to the health of humans and to the environment.



### EuroLATEX

Tests developed in association with TFI (Deutsches Teppich Forschungsinstitut - Aachen) show that Latexco products meet the EuroLATEX ECO-Standard. This standard defines the maximum acceptable limits of toxic substances or substances considered harmful to health in latex foam cores.





### LGA

LGA tests prove that our products excel in durability and elasticity. By complying with these standards, Latexco mattresses automatically meet all requirements to carry the Eco label of the European Community.

### FSC®

This certificate guarantees that products with the FSC certificate are produced with materials from responsibly managed forests and provides full transparency and traceability throughout the whole process through control organisations like Rainforest Alliance.

# A bedding product offering so broad that it meets every comfort need

To help our customers choose the bedding solutions that best meet their unique sleeping experiences, we have categorized our products in five product lines. Whatever line you chose, you are sure to buy a high-quality mattress/pillow/topper, designed to guarantee a great night's sleep!

## latexco natural latex

Our 'latexco natural latex' line includes a fine selection of bedding products made of pure natural latex - as a cast-iron guarantee of exceptional comfort. Products that contain at least 85% natural latex (or over) are qualified as a natural product.

- Plush and luxurious comfort
- Exceptional elasticity
- Optimal ventilation thanks to the open cell structure of latex
- Natural protection against fungi, bacteria and dust-mites
- Unequalled resilience & superior stretch offers a unique three-dimensional support
- Natural latex is a 100% renewable resource





### **latexco classic latex**

Combining both natural and synthetic latex, 'latexco classic latex' is our standard range of comfortable, high-quality mattresses, toppers and pillows. By fine-tuning the exact proportions of natural and synthetic latex over more than 60 years, we can customize the mattress to fit each customer's specific needs.

### **latexco springs**

Our 'latexco springs' range offer a broad variety of coil shape and diameter from VSS (very small spring) to big coil. Our product range is heat treated reinforcing the strength & durability improving coil resiliency and support for a comfortable and relaxing night sleep.

### **latexco fom**

'latexco fom' bedding products are manufactured with high quality PU foams. Each variant version has its own distinguishing characteristics in terms of sleeping comfort.

### **latexco fusion**

By 'fusing' our latex components, PU foams and/or pocket springs, we manufacture strong, durable and customized bedding solutions - the 'latexco fusion' product line. The combination of our unique product ranges enables us to provide customers with personalized levels of sleeping comfort.

